

MES2105A-2F

5-Port Layer 2 Unmanaged Embedded Industrial Ethernet Switch



- 2x100Base-FX ports (multi/single-mode, SC/FC/ST connector), 3x10/100Base-T(X) ports (RJ45 connector)
- 100Base-FX ports support SC/FC/ST, single-mode/multi-mode, wavelength and transmission distance optional
- 10/100Base-T(X) ports support full/half duplex and auto MDI/MDI-X, plug and play, convenient and fast
- Support DC5~32V power input and complies with intrinsically safe circuit design standards
- -40°C ~+85°C operating temp to meet the application needs of industrial environment





Product Description

MES2105A-2F is a 5-port layer 2 100M unmanaged embedded industrial Ethernet switch designed for industrial communication network applications. It meets intrinsically safe design requirements. This series of products supports 2×100Base-FX ports and 3×10/100Base-T(X) ports, and support single DC5~32V power input. The power supply supports anti-reverse connection, slow start, overcurrent and overvoltage protection, and adopts embedded installations to meet the needs of various network sites. The hardware adopts fanless, intrinsically safe, wide-temperature design, compact size, selected industrial-grade components, and supports -40 °C to +85 °C operating temp. The power supply meets the requirements of intrinsically safe circuit design standards and has passed strict safety regulations and EMC tests, to meet the application requirements of harsh industrial environments.



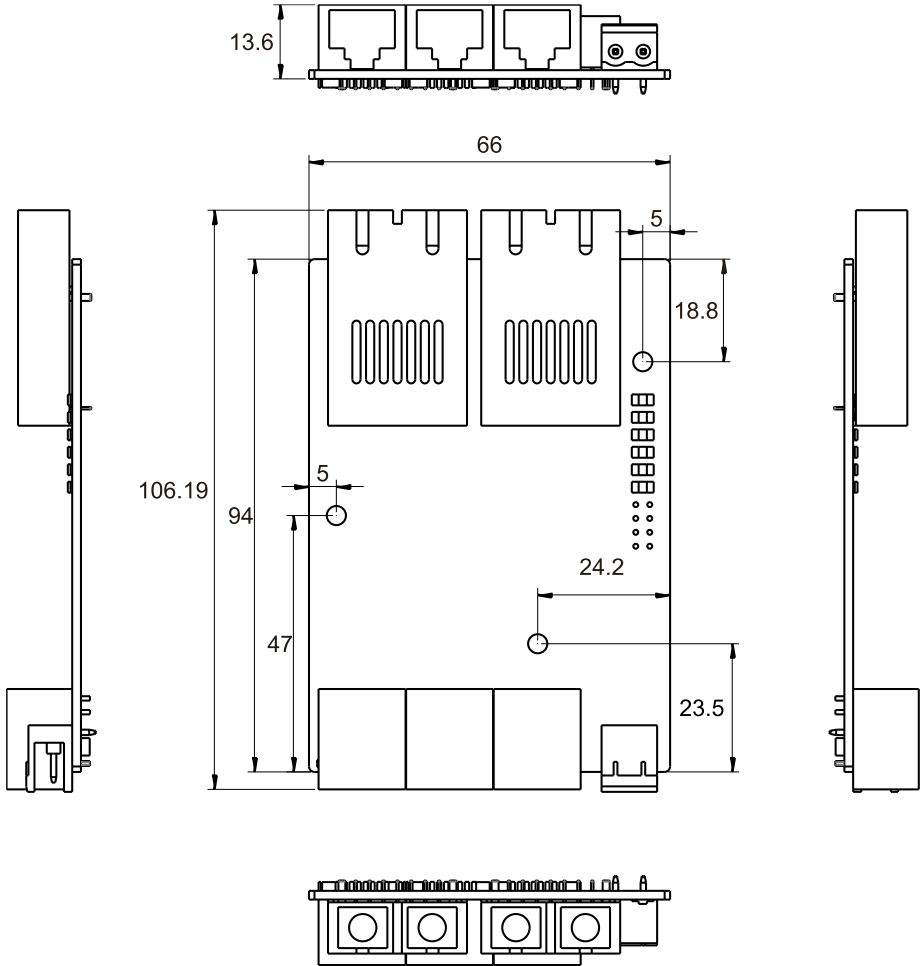
Specification

Switch Capability	
Processing Type	Store-and-Forward
Backplane Bandwidth	1Gbps
Buffer Size	96KB
MAC Table Size	2K
Interface	
100M Fiber Port	2*100Base-FX fiber ports (SC/FC/ST, single-mode/multi-mode, wavelength and transmission distance are optional)
100M Copper Port	3*10/100Base-T(X) auto-sensing RJ45 ports, support full/half duplex and auto MDI/MDI-X
Status LED	Power supply status LED, interface status LED, support external export of status LED signal
Power Supply	
Input Voltage	DC5~32V, support anti-reverse connection and over-current protection
Power Consumption	<1.95W@DC12V
Connection	2-position 5.08mm pitch terminal blocks
Physical Characteristics	
Dimensions	94x66x13.6 mm
Installations	Embedded installation
Weight	About 71.5g
Working Environment	
Operating Temp	-40°C~+85°C
Storage Temp	-40°C~+85°C
Relative Humidity	5%~95%(non-condensing)



Dimensions

Unit: mm





Ordering Information

Standard Model	100M Fiber Port	10/100M Copper Port	Input Voltage
MES2105A-2F(M/S)	2	3	DC5~32V



Contact Us

Wuhan Maiwe Communication Co., Ltd

Address: No.52 Liufang Avenue, East lake High-tech Development Zone, Wuhan, China.

Tel: 027 8717 0217

Mail: enquiry@maiwe.com

Official site: www.maiwe.com

Copyright © Maiwe Communication All rights reserved