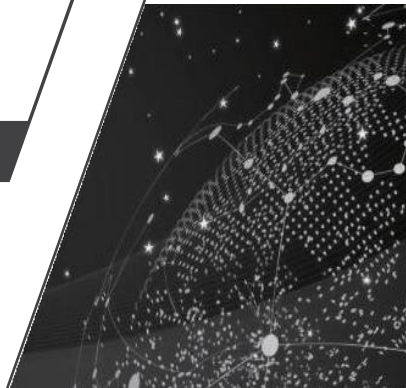


Maiwe

Industrial Ethernet Switch

User manual

MIGE2210G-2GF-8GT



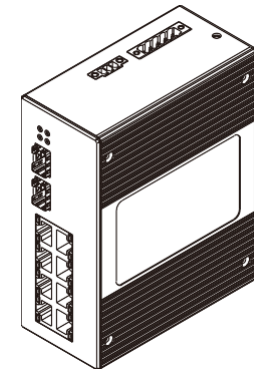
1 Packing list

The package of this switch contains the following items. If any item is found to be missing or damaged, please contact the agent or the customerservice center of Maiwe for assistant

| Items | Quantity | Remarks |
|----------------------------|----------|------------------|
| Industrial Ethernet Switch | 1PCS | |
| Power cord | 1PCS | AD220 model only |
| User Manual | 1PCS | |

2 Product description

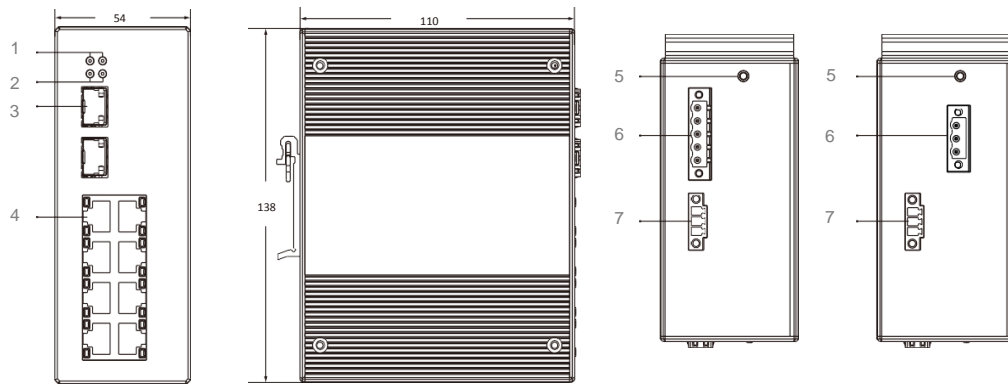
MIGE2210G-2GF-8GT is a unmanaged DIN-rail industrial Ethernet switch. MIEN2210G- 2GF-8GT provides 10 ports (8 Gigabit RJ45 and 2 Gigabit SFP ports).



MIGE2210G-2GF-8GT

3 Interface description

UNIT: MM



| NO. | Description |
|-----|-------------------------------------|
| 1 | Power indicator light PWR |
| 2 | Gigabit optical indicator light L/A |
| 3 | Gigabit SFP Port |
| 4 | Gigabit RJ45 Port |
| 5 | Ground screw |
| 6 | Power input terminal |
| 7 | Relay alarm input terminal |

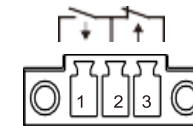
The indicator description of the switch is shown in the following table.

| Indicator lights | Status | Definition |
|--------------------------|----------|--|
| System status LED | | |
| PWR | On | Power is connected and operating normally |
| | Off | The power is unconnected or the system is abnormal |
| | Blinking | System operates normal |

| | | |
|---|----------|---|
| RUN | Off | System operates abnormal |
| Fiber Status LED | | |
| L/A1/G1 | On | The port has established a valid network connection |
| | Blinking | The port has network activity |
| | Off | The port has not established a valid network connection |
| Ethernet RJ45 Status LED | | |
| Each Ethernet RJ45 port has two indicator lights, The yellow light is the port rate indicator, and the green is the port | | |
| 10/100/1000M (Yellow) | On | 1000M work status (1000Base-TX) |
| | Off | 10M/100M work statuses (10Base-T or 100 Base-TX) |
| LINK/ACT (Green) | On | The port has established a valid network connection |
| | Blinking | The port has network activity |
| | Off | The port has not established a valid network connection |

【Relay Connection】

The power failure alarm relay of this series of switches adopts 3-position ports with 3.81mm pitch for the wiring ports. This relay is 1 normally open and 1 normally closed relay. The middle 1 bit is the common terminal, the two ports on the left are normally open relays, and the two on the right are normally closed relays. When the switch is working normally, the normally open relay is energized and closed, and the normally closed relay is disconnected. When the system is powered down, the normally open relay is powered off and the normally closed relay is closed. The recommended switching load capacity of the relay is 1A (24VDC).



ALARM

| NO. | Pin definition |
|-----|--|
| 1 | Alarm relay output normally open end |
| 2 | Alarm relay output common terminal |
| 3 | Normally closed terminal of alarm relay output |

4 Hardware installation

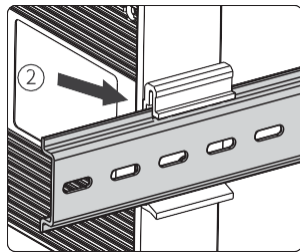
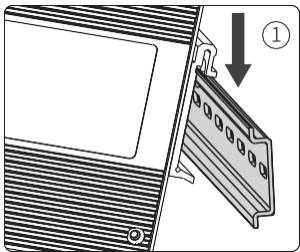
⚠ Installation Precautions

To prevent equipment damage or personal injury caused by improper use, observe the following precautions:

- During the installation process, you need to wear anti-static gloves or anti-static gloves, and power-off the switch.
- Please make sure that the input voltage is within the input voltage range marked on the switch.
- The transmission distance has a certain relationship with the connected wire. It is recommended to use a standard Cat5e/6 network cable.
- The equipment must be grounded for lightning protection, otherwise the protection level of the equipment will be greatly reduced; please use a wire of No. 20 or more to connect the grounding terminal to the ground.
- The power line, ground line and signal line are laid out separately and the distance is not less than 5cm.

Device installation

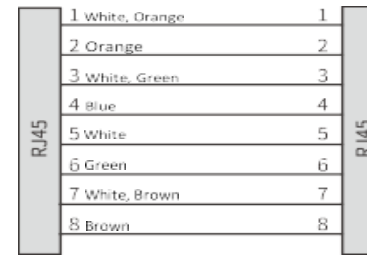
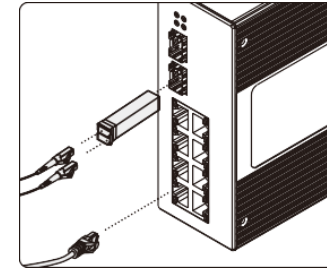
- Tilt the switch upwards so that the upper end of the buckle is fastened to the upper end of the DIN rail.
- The lower end of the back buckle is buckled into the DIN rail.



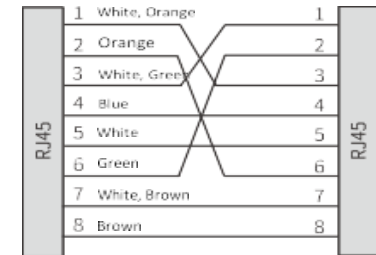
Device connection

➤ Network cables connection

Connect the optical fiber and network cable to the port in the correct



Category5 direct connection



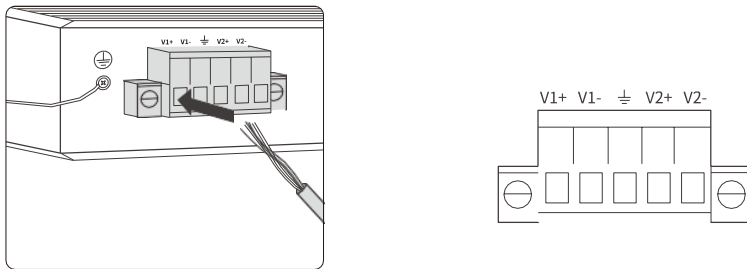
Category5 crossover connection

⚠ Warning

1. Signals were transmitted by laser through optical fiber. The laser meets the requirement of class I, no harm with normal operation. Do not look directly into the fiberport and the end of the optical fiber terminator.
2. Dust plugs need to be installed when optical connectors and optical modules are not in use. Dust caps need to be installed when optical fibers are not in use.
3. The bending radius of optical fiber should be greater than 20 times the diameter of the optical fiber. In general, the bending radius should be equal to or greater than 40mm.

➤ Power input

Before connecting the power cord, make sure that the ground is connected. Do connect the power cord to the power terminal of the device according to the definition.



💡 Notes

1. When using a switch, the voltage can only be input from V1+ and V1-, V1+ connects to live wire L, and V1- to neutral wire N. Do not connect from V2+, V2-; pay attention to safety and prevent electric shock.
2. Power-on operation: First connect the power cord to the power terminal of the device according to the definition shown in the figure above, and then power on.
3. Power-off operation: first unplug the power plug, and then remove the power cord.

5 Specifications

| MIGE2210G-2GF-8GT | |
|----------------------------|---|
| Exchange | |
| Bandwidth | 20G |
| Cache Size | 1.5Mbit |
| MAC table size | 4K |
| Interface | |
| Gigabit Fiber Port | 2*1000Base-X |
| | SFP Slot |
| Gigabit Copper Port | 8*10/100 /1000Base-T(X)RJ45 ports |
| | Full-duplex/half-duplex adaptive, supports MDI/MDI-X adaptive |
| Power | |
| Consumption | 5.2W@24V(MAX) |
| DC power input | DC12~48V, DC48V(36-72V) |
| | Supports dual power supply redundancy and reverse connection protection |
| AC power put | AC85~264V (frequency : 47~63Hz) or DC110~370V |
| Physical | |
| Size | 138mm×110mm×54mm(L×W×H) (not include din-rail) |
| Installation | 35mm standard din-rail |
| Heat | Aluminum alloy single-rib chassis surface scattered |
| IP | IP40 |
| Weight | About 0.75kg |
| Working Environment | |
| Working Temp. | -40°C~+85°C |
| Storage Temp. | -40°C~+85°C |

| | |
|--------------------------|---|
| Humidity | 5%~95%(No condensation) |
| Industry Standard | |
| EMC | IEC61000-4-2(ESD),Level4 |
| | IEC61000-4-5(Surge),Level4※Ethernet ports support 6KV lightning |
| | IEC61000-4-4(EFT),Level4 |
| | IEC61000-4-3(RS),Level4 |
| | IEC61000-4-6(CS),Level4 |

6 Order guide

| Model | Gigabit SFP | Gigabit RJ45 | Power supply |
|-------------------|-------------|--------------|---|
| MIGE2210G-2GF-8GT | 2 | 8 | DC power supply: DC12~48V or DC48V(36~72V) AC power supply: AC85~ 264V (frequency: 47~63Hz) or DC110~370V |

7 Pledge

Thank you for purchasing Maiwe products. You will enjoy the following services when using Maiwe products.

We solemnly promises: under normal use, one month's return, one-year free maintenance, five-year warranty, and lifetime maintenance. The specific details are as follows:

- If Maiwe products have quality problems and cannot work normally, they will be refunded for one month, free maintenance for one year, warranty for five years, and maintenance for life.
- If the number of repaired products is less than 10, the repair service will be

completed within 7 days (excluding transportation time), and the repair service will be completed within one month for more than 10 sets.

- Optical passive products such as optical fibers, optical cables, jumpers, flanges, and optical cable terminal boxes are guaranteed within two years, but no return service is provided.
- The accessories and power supply that come with the product are guaranteed for one year.
- When sending the product back to Maiwe for repair, it is recommended that the customer use the original packaging or the packaging with the same protective effect, otherwise the customer shall bear the risks that occur during the transportation.
- The repaired product can enjoy another 6 months warranty service.
- The product after-sales service is detailed in the purchase and sale contract, and Maiwe has the final interpretation right of this description.

Wuhan Maiwe Communication Co., Ltd.

Add: Building E2, No. 2 Building, Area E, No. 52 Liufang Avenue, East lake High-tech Development Zone, Wuhan, China.

Tel: 027-87170215/16 Fax: 027-87170217

Post Code: 430205

Site: www.maiwe.com

 Statement

Due to the continuous updating and improvement of products and technologies, the contents of this manual will be updated from time to time. All the information in the manual is only used for instructions, if the content in the text does not completely match the actual product, please understand and please contact our customer service in time.

Copyright 2021 Maiwe Communication All rights reserved.

The right to interpret the information published in this material belongs to Wuhan Maiwe Communication Co., Ltd.