

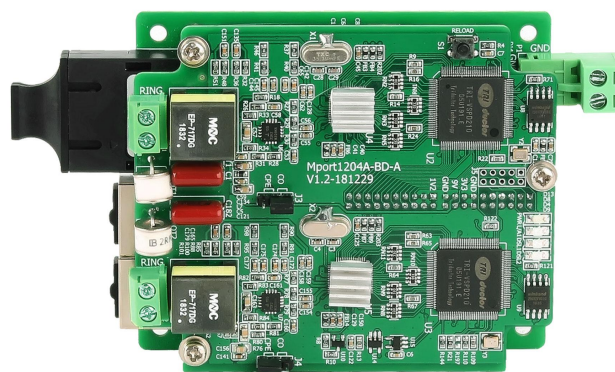
## Mport1204A

Dual VDSL 4 x10/100M ports

Embedded Industrial Ethernet Extender

### Product description

Mport1204A dual-channel embedded network extender is a dedicated line transmission device developed by Maiwe with VDSL2 technology. The product is used in pairs, one set to the central office (CO) and the other to be set to the user (CPE). It is a network device that can transmit Ethernet signals over long distances through ordinary cables such as twisted pairs, telephone lines, and coaxial cables. This solution exceeds the traditional Ethernet limitations and expands the copper wire network.



### Features:

- IEEE 802.3u 100Base-TX Fast Ethernet Extender;
- IEEE 802.3x flow control and back pressure;
- ITU-T G.933.2 VDSL2 standard;
- Support 2 DSL interfaces;
- Support 2 RJ-45 10/100Mbps Fast Ethernet ports;
- Extend voice and Ethernet to 1 km away;
- Support broadcast storm suppression;
- Industrial grade power input, two-stage thyristor protection circuit design;
- Suitable for harsh industrial site environmental applications.

## Product specification

### Technical specifications

	ITU-T G.993.2
Ethernet Standard	IEEE802.3 (10Base-TX) IEEE802.3u (100Base-TX)

### Interface

	Port numbers: 4
Ethernet	Connector: 1x9 fixed fiber port(single or multimode, SC/FC/ST available)or RJ45 Baud rate:100Base-FX/ 10/100M-T(x) auto-negotiation RJ45 port Port Number:2
Interface form	Industrial terminal
Terminal block for power input	2-position plug-in terminal

### Communication distance

Communication distance	20M: 300m (use ordinary network cable to test) 3M: 1000m (use ordinary network cable test, impedance is 670 ohms) Transmission distance is determined by transmission data bandwidth, twisted pair wire diameter, twisted pair impedance, transmission signal frequency.
------------------------	--

### LED indicator lights

Ethernet indicator	LINK / ACT (green); SPEED (yellow)
DSL indicator	DSL
Power indicator	PWR

### Power Requirements

Power input	DC12-32V
Full-load consumption	<7.2W(Max)
Over voltage protection	Support

### Working Environment

Operating Temperature	-10°C~70°C
Storage temperature	-40°C~85°C
Ambient Humidity	5%~95%( non-condensing)

### Physical Characteristics

Shell	None
Installation	Positioning hole installation
Dimension	155mmx18mmx125mm (WxHxD)

## Warranty

Warranty period	5 Years
Certification	CE, FCC, RoHS

## Ordering information

Mport1204A	Dual twisted pair VDSL extension + 4-way 100M Ethernet extender (extended to 3 km)
Mport1204A-F(M/S)	Dual twisted pair VDSL extension + 2 channel 100M fiber + 2 channel 10/100M embedded industrial grade Ethernet extender (extended to 3 km)
Mport1204A-2F(S/M)	Dual twisted pair VDSL extension + 2-way 100M fiber + 2-way 100M Ethernet extender (extended to 3 km)